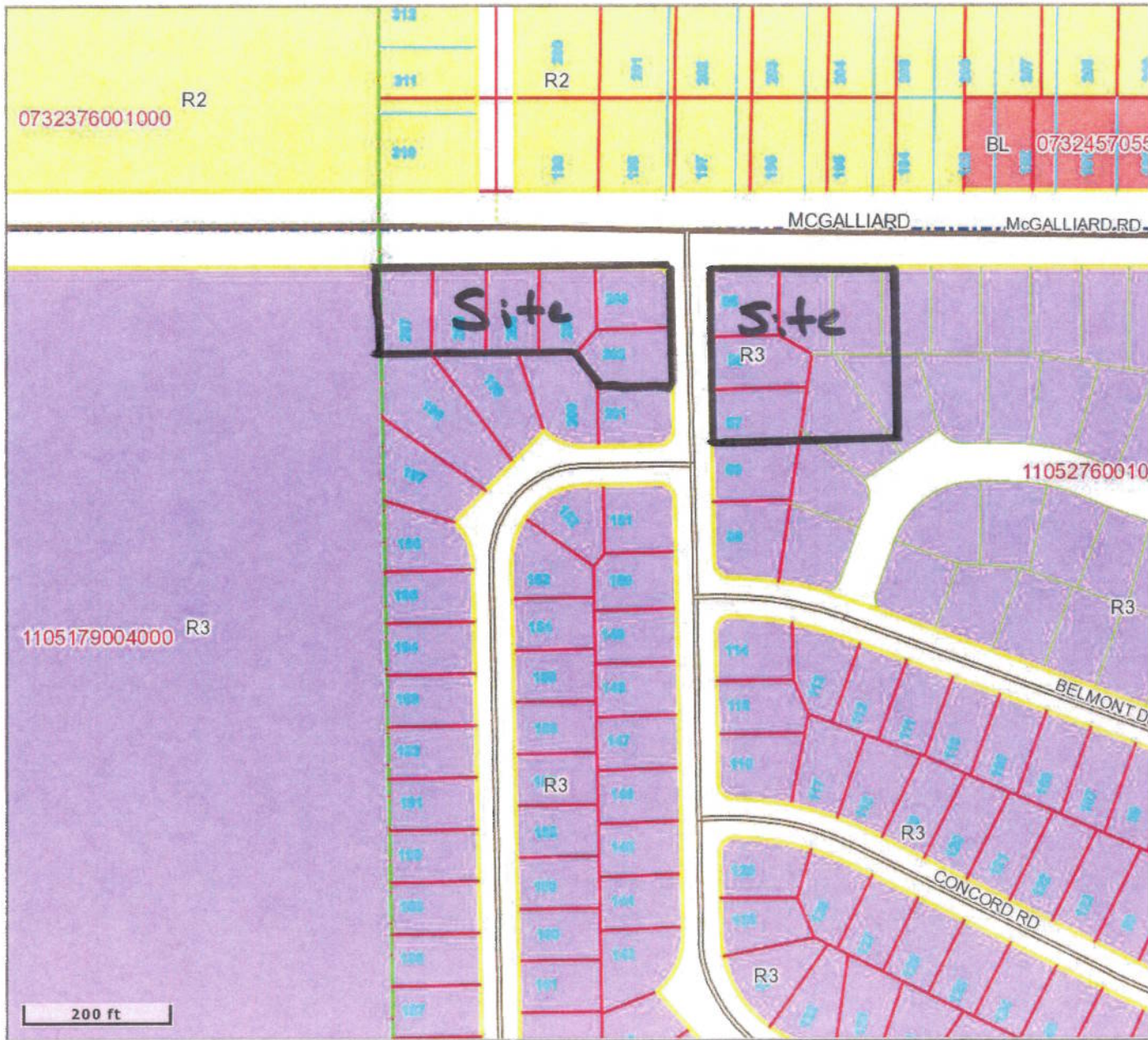


Delaware County, IN

Homer Bradburn Rezoning



Last Data Upload: 8/1/2024

Right of Way: Road right of way (Road ROW) are symbolized in the cadastral lines layer on the map. Only Road ROW in platted areas should be considered as public or utility right of ways. For un-platted areas, contact the Delaware Engineering Department at (765) 747-7765 or in the City of Muncie contact the City Engineer's Office at (765) 747-4878.

Land Records: The land record layers including parcel information is a work in progress. Some errors and commissions have occurred in the transfer of property information from paper plat books to the digital format that is available on this website. Delaware County is currently working to identify and correct these issues. Land records displayed on this site are for GRAPHIC REPRESENTATION AND INFORMATION RETRIEVAL PURPOSES ONLY. Refer to official surveys for detailed parcel information. Delaware County makes no warranties for the accuracy or completeness of this information.

Zoning: For information regarding permitted uses and detailed information about zoning classifications, contact the Delaware-Muncie Metropolitan Plan Commission at (765-747-7740)

BALL STATE SHIDLER APTS
0732376001000
3400 BLK N TILLOTSON AVE

ENV NUMBER

OFEK BOAZ /
07324530
3307 N VIENNA

HOWARD GLEN F
07324530
2500 W MCGA

W McGA

BRADSHAW REALTY, L.P.
11052510120
3009 N RICHMOND

ANDERSON J
11052510120
3009 N RICHMOND

NOVICK MAR
11052510120
3001 N RICHMOND

N TILLOTSON AVE

BALL STATE UNIVERSITY
1105176004000
2800 N TILLOTSON AVE